



# Type 7200BP

## Precision Back Pressure Regulator

For applications that require high relief capacity

The Type 7200BP Back Pressure Regulator is a high flow, highly accurate and repeatable pneumatic relief valve with an adjustable set point. It is a normally closed valve that will remain closed until the pressure at the inlet exceeds the regulator's set point. When pressure does exceed the regulator's setpoint, the valve will open and vent air until the pressure decreases to below the setpoint. A typical application is to provide protection against over pressurization in the downstream portion of a pneumatic system. In an over pressurization scenario, the air flowing through the 7200BP can be vented to atmosphere or could be captured and directed to trigger an emergency shut-off valve.

### Features

- **1/4", 1/2", or 3/4" NPT Porting**
- **Two 1/4" NPT Gauge Ports**
- **Large Relief Valve**  
Allows flows up to 350 scfm.
- **Sensitive**  
Reacts to pressure deviations to within 1/2" water column pressure.
- **Stable Performance**  
Isolated control chamber prevents hunting and vibration during flow conditions.

### Specifications

<b>Maximum Flow Coefficients (Cv)</b>	Port	
	3/4"	7.5
	1/2"	6.2
	1/4"	4.6
<b>Exhaust Capacity</b>	Depends on port size. See flow curves	
<b>Sensitivity</b>	Less than 1/2" water	
<b>System Pressure</b>	250 psig (17.5 bar) Maximum	
<b>Operating Temperature</b>	-40°F to 200°F (-40°C to 93°C)	
<b>Weight</b>	2.5 lbs (1.13kg)	
<b>Mounting</b>	Pipe, panel, or bracket	
<b>Port Sizes</b>	In/Out: 1/4", 1/2", or 3/4" NPT Gauge: (2) 1/4" NPT	

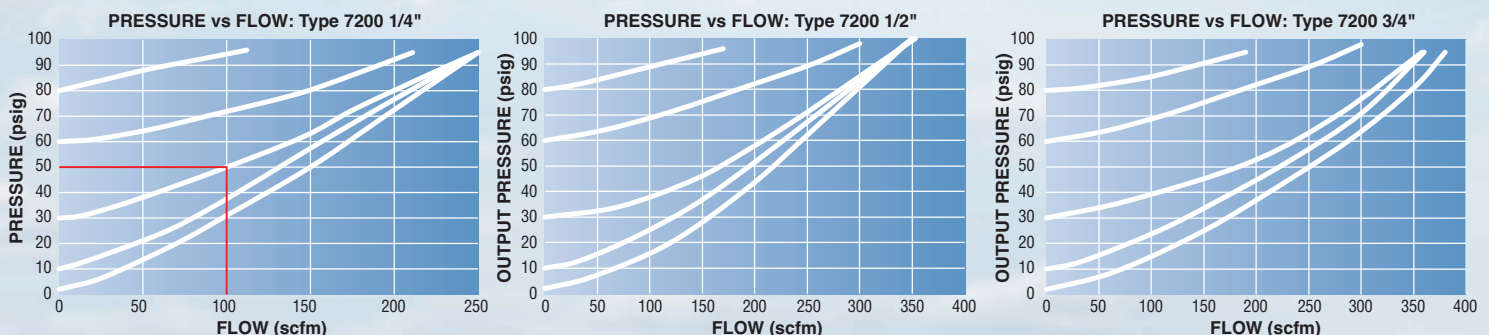


### Materials of Construction

<b>Housing</b>	Diecast aluminum alloy
<b>Bolting</b>	Zinc plated steel
<b>Internal Components</b>	Stainless steel, plated steel, brass, aluminum
<b>Elastomers</b>	Nitrile
<b>Knob</b>	Phenolic plastic

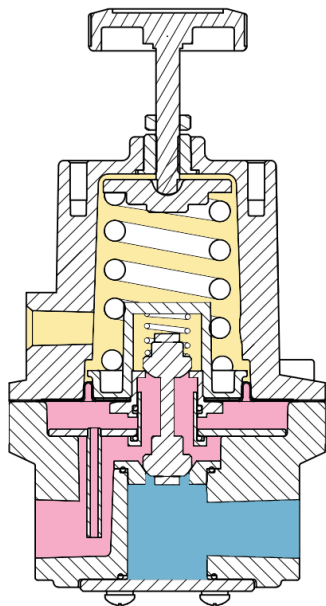
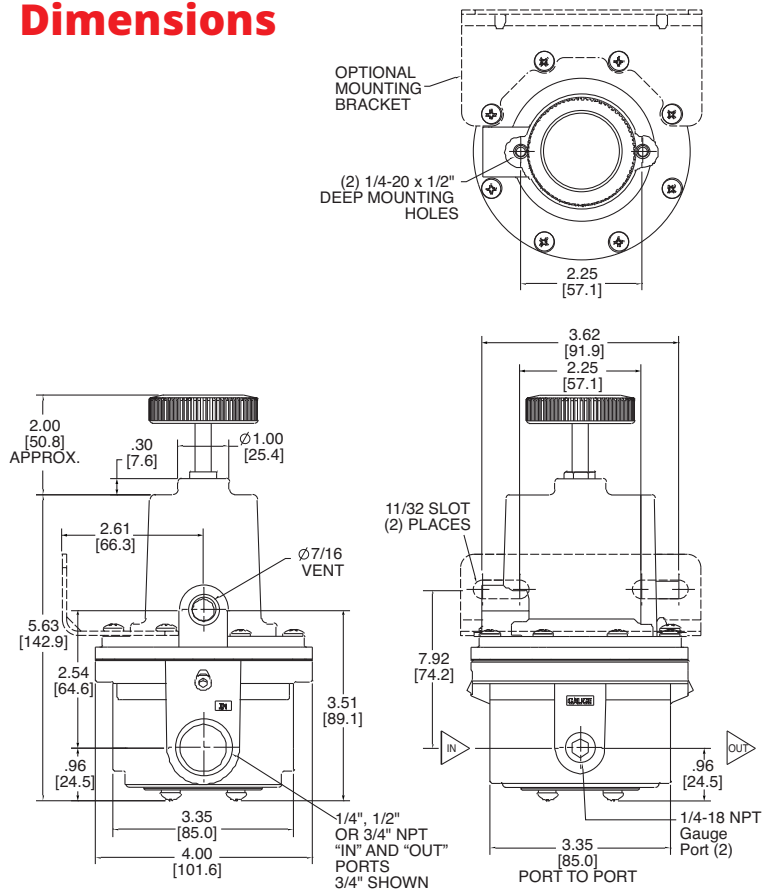


### Flow Characteristics



# Type 7200BP Precision Back Pressure Regulator

## Dimensions



## Ordering Use this coding system to order

### Model

**7200**

### Options

### Port Size (NPT)

**B** 1/4"  
**D** 1/2"  
**E** 3/4"

### Range

**A** 0-2 psig (0-0.15 bar)  
**B** 0-10 psig (0-0.69 bar)  
**C** 0-30 psig (0-2.0 bar)  
**D** 0-60 psig (0-4.0 bar)  
**E** 0-100 psig (0-6.89 bar)  
**F** 0-150 psig (0-10 bar)

**K** Stainless Steel Knob Stem, knob itself is phenolic plastic  
**S** Square head adjusting screw  
**T** Tamper-proof Cover: prevents casual adjustment of output pressure  
**X** ATEX 2014/34/EU

## Accessories

**Mounting Bracket (zinc plated steel):** P/N 449-542-045

**Gauges:** 1/4" NPT back mount, 2" face, dual scale

Range psi (bar)	Part Number
0-15 (0-1.0)	446725-003
0-30 (0-2.0)	446-725-004
0-60 (0-4.0)	446-725-001
0-160 (0-11)	446-725-002

**Warranty** ControlAir, LLC products are warranted to be free from defects in materials and workmanship for a period of eighteen months from the date of sale, provided said products are used according to ControlAir, LLC recommended usages. ControlAir, LLC's liability is limited to the repair, purchase price refund, or replacement in kind, at ControlAir, LLC's sole option, of any products proved defective. ControlAir, LLC reserves the right to discontinue manufacture of any products or change products materials, designs or specifications without notice. Note: ControlAir does not assume responsibility for the selection, use, or maintenance of any product. Responsibility for the proper selection, use, and maintenance of any ControlAir product remains solely with the purchaser and end user. Drawing downloads available at [www.controlair.com](http://www.controlair.com)



8 Columbia Drive / Amherst, NH 03031 USA / [www.controlair.com](http://www.controlair.com) / [sales@controlair.com](mailto:sales@controlair.com) / 603-886-9400 / FAX 603-889-1844

An ISO 9001:2015 Registered Company

P/N 441-625-075 1/20