

FEATURES

- Quick connect/disconnect
- Laser welded flush diaphragm
- Tri-clamp connection

APPLICATION

- Food & beverages industries
- Dairy & Ice cream industries
- Pharmaceuticals & cosmetics

Tri-clover

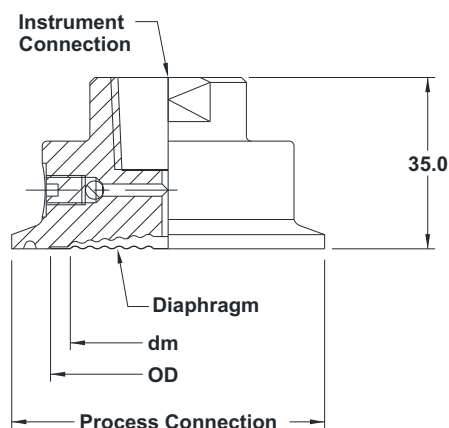


STANDARD SPECIFICATIONS

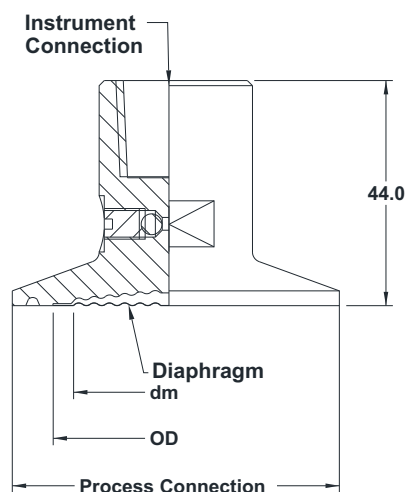
Range type	: -1...0 bar to 0...40 bar Tri-Clover
Chamber material	: AISI 316 SS
Diaphragm	: AISI 316L SS
Instrument connection	: 1/2" NPT (F) / 1/2" BSP (F)
Sealing fluid	: Food Grade oil [-20°C to 140°C]
Process connection	: 1" UP TO 2.5" Connection
Assembly	: Direct

DIMENSIONAL DRAWING

Type S31



Type S32



All dimensions are in mm.

ORDERING CODES

1. RANGE TYPE

S31 -1...0 bar to 0...40 bar Tri-Clover
S32 -1...0 bar to 0...40 bar Tri-Clover
 Refer range vs connection size table

2. CHAMBER MATERIAL

LF AISI 316 SS
LG AISI 316L SS

3. DIAPHRAGM MATERIAL

DG AISI 316L SS

4. INSTRUMENT CONNECTION

03B 3/8" BSP (F)¹
04N 1/2" NPT (F)¹
02B 1/4" BSP (F)
04B 1/2" BSP (F)¹
02N 1/4" NPT (F)

S31

LF

DG

04N

5. SEALING FLUID

OF Food grade oil [-20°C to 140°C]

6. TRI-CLOVER CONNECTION

T01 1" Connection
T15 1.5" Connection
T02 2" Connection
T25 2.5" Connection

7. ASSEMBLY

B8 Direct

8. OTHER OPTIONS

XZ Dry seal
HL Helium leak test
TM Material test certificate 2.2
TC Material test certificate 3.1
E7 4" Bourdon tube system

OG

T15

B8

XX

Ordering Example : D301-S31-LF-DG-04N-OG-T15-B8

CONNECTION SIZE Vs RANGE CHART

Thread Size	1"	1 1/2"	2"	2 1/2"
"Diaphragm Size (OD/ED) in "mm"	35/25	38/32	48/40	62/52
Range (bar)	0...4 to 0...40	0...2 to 0...40	0...1 to 0...40	-1...0 to 0...40

APPLICABLE ACCESSORIES

A302 Tri-Clamp, Sealing Ring & Bottom part

NOTES:

1. Available with 63 mm Bourdon tube system
2. For Tri-clamps, Sealing rings & Bottom mating parts, please refer model A302.
3. All metal diaphragms are laser welded to the Top Chamber.